

Study: Save up to **40%** off fuel bills with heat and hot water boiler upgrades!*

*See footnote at the bottom of page 2.

INTRODUCING . . .

Ascent™ COMBI BOILER by ENERGY KINETICS Plus



Ascent Plus Combi uses either sidewall venting or a conventional chimney.

No expensive stainless steel chimney liner is required! (Installs with inexpensive polypropylene chimney liner.)

SHOWN WITH
SILENT BURNER
COVER



Multi-Fuel

- Runs on oil, gas OR biofuel (with blends of up to **100% biodiesel!**)
- Combined heat and hot water in one boiler!
- Whisper quiet with silent burner cover – no need to turn up the TV!
- Replaces 2, 3 and 4 section oil boilers!
- Lifetime Limited Warranty†
- Proven 30 year boiler!

†See actual warranty for details.

100% Bioheat®
fuel ready!



**Cuts
fuel bills
season
after
season!**

Ascent Plus Combi is ready 24/7, just like conventional tankless coil boilers. But, because of its unique design, custom controls and exceptional plate heat exchanger, it cuts your energy bill.

There's no other tankless coil boiler that compares for energy savings, quiet operation or hot water delivery.



Silent burner cover for whisper quiet operation.

Built in stand keeps Ascent Plus off the cold floor.

3

Advancements that allow

1

Ascent Plus uses the revolutionary Sealix® plate heat exchanger for unmatched hot water!

Our *plate heat exchanger* delivers continuous hot water unmatched by any tankless coil boiler. And there are no studs to break or gaskets to leak with easy service union connections.



3

The Ascent HydroStat® control saves more fuel than other boiler controls!

The **Ascent HydroStat** allows you to adjust settings to match your individual life style. For greater savings, select a **Smart Learning Mode** at the touch of a button for on-demand operation. If you don't use hot water over-night during the summer, your boiler doesn't have to run!

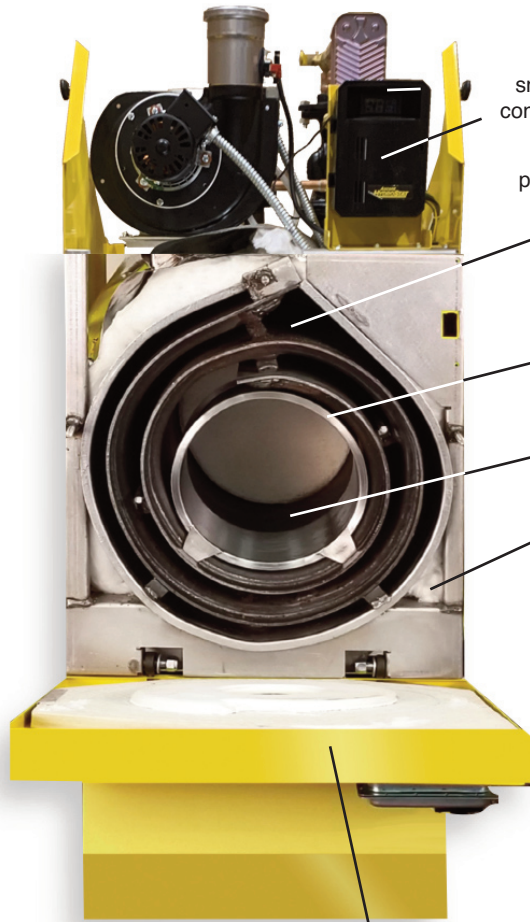
In fact, the Ascent Hydrostat is *so smart*, it learns your weekly routines and is ready when you typically need hot water – and saves your energy when you don't.

Now! Cut **even more** off heating bills! Ask about our **Resolute™ System 2000®** or **Accel CS™** boilers, each featuring **advanced Energy Manager controls.**

* Data and conclusions are drawn from the report "Performance of Integrated Hydronic Heating Systems" (2007), Energy Resources Division, Department of Energy Sciences and Technology, BNL, Under Contract No. DE-ACO2-98CH10886 with the United States Department of Energy by Dr. T. Butcher; and "Chimney Related Energy Losses in Residential Oil-Fired Heating Systems" (1990).

©HydroStat is a registered trademark of Hydrolevel.

Ascent Plus Combi to outperform cast iron boilers!



Swing down door for easy access.

The Ascent Hydrostat[®], smart control for home comfort! (See below, #3)

The energy converter is a proven 30 year spiral design for the highest efficiency. There are no sections or pins to foul, clean, or leak.

Removable stainless steel alloy combustion chamber for clean burning operation.

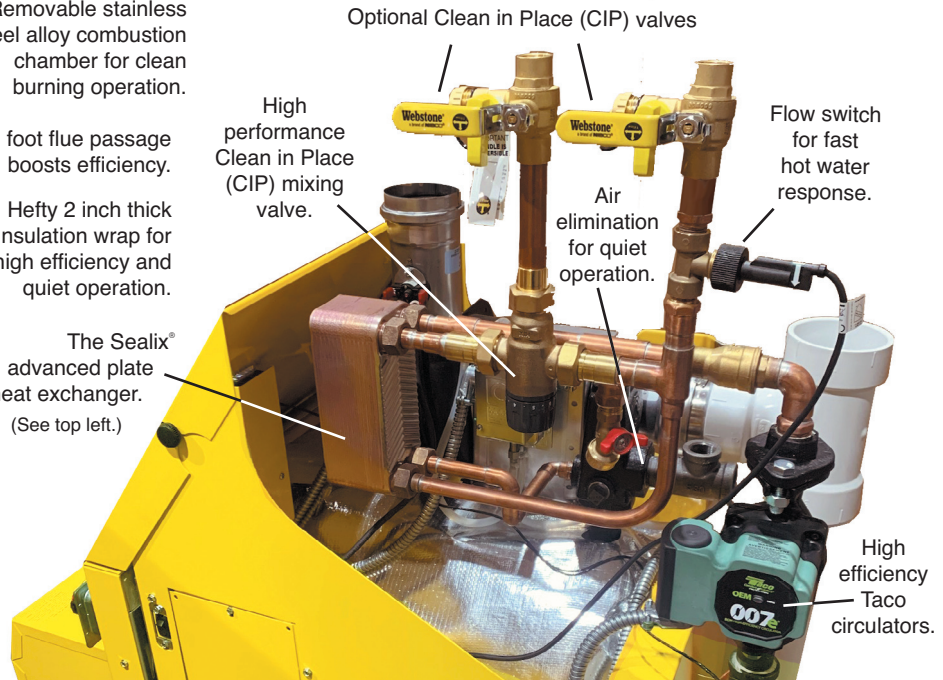
13 foot flue passage boosts efficiency.

Hefty 2 inch thick insulation wrap for high efficiency and quiet operation.

The Sealix[®] advanced plate heat exchanger. (See top left.)

2

Ascent Plus engineering enables efficiency far above old-fashioned tankless coils!



Optional Clean in Place (CIP) valves

High performance Clean in Place (CIP) mixing valve.

Air elimination for quiet operation.

Flow switch for fast hot water response.

High efficiency Taco circulators.



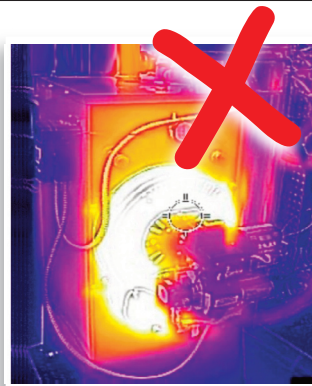
Leaks and rust

Tankless coil boilers often fail at their coil flanges or cast iron fittings. **Ascent Plus has no coil flanges or cast iron fittings.**

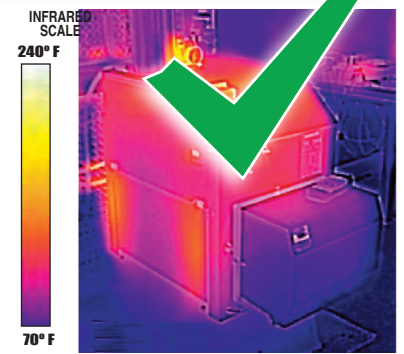


Air flow

Tankless coil boilers waste fuel through draft regulators. **Ascent Plus has no draft regulator.**



Infrared doesn't lie! A tankless coil boiler (left) wastes heat through a glowing hot burner door. The well-insulated, quiet design of Ascent Plus Combi (right) effectively captures heat and sends it to your home.



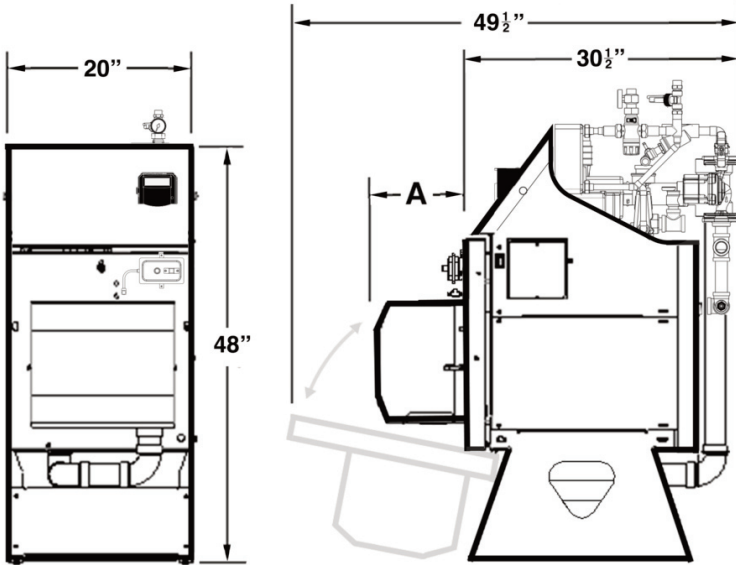
INFRARED SCALE
240° F
70° F

What does Bioheat fuel mean to me?

Bioheat fuel, or biodiesel, is a renewable, biodegradable high grade fuel manufactured domestically from waste stream sources including vegetable oils, animal fats or used cooking oil. It's a clean, easy choice to reduce emissions *without sacrificing your comfort or fuel efficiency.* **Resolute RT can use fuel oil blends up to 100% biodiesel (B100). THIS CAN CUT CARBON EMISSIONS UP TO**

85%

Ascent PLUS Combi Model EK1T Installation Dimensions



Installation Dimensions

Recommended service clearances:

20" from front door face
5" from left side
12" from right side

Clearance to combustibles:

4" from rear cover
10" above top cover
0" from polypropylene pipe
0" for all the other dimensions

Ascent PLUS EK1T Combi Data

Weight	405 lbs.
Water Content	3 gallons
Air Inlet Pipe Size	3" PVC
Boiler Flue Outlet	3" polypropylene
Poly Chimney Liner	3"
Hydronic Supply	1"
Hydronic Return	1"
Hot Water Supply	3/4"
Hot Water Make-up	3/4"
Hydronic Circulator	Taco 007e

Dimension "A" (On chart at left)

Burner

Carlin EZ-1-Oil	9.5"
Carlin EZ-Gas	12.75"

Ascent PLUS Combi Specifications – All Models

Oilheat and Bioheat[®] fuel home heating system

Model	Input Rating (GPH)	Heating Capacity (MBH)	AFUE	Domestic Hot Water *
EK1T+	0.68	86	91.0	155
EK1T+104	0.74	93	90.8	175
EK1T+119	0.85	106	90.4	195
EK1T+140	1.00	123	89.9	205

Natural gas and propane home heating system

Model	Input Rating (MBH)	Heating Capacity (MBH)	AFUE	Domestic Hot Water *
EK1T+	80	73	90.3	135
EK1T+100	100	90	89.7	175
EK1T+150	150	135	88.3	205

* Domestic hot water rating based on first hour draw with 67°F rise and a 3 gpm draw on a 40 gallon tank; first hour draws over 195 gallons are calculated based on continuous draw with 67°F rise at maximum flow rate.

† UL listed for use with oilheat blends up to 100% biodiesel (ASTM D6751) with a B100 listed burner.

Included (factory piped and assembled): ASSE1017 mixing valve, boiler base, blocked vent safety switch, fan prover, blocked intake switch, stack temperature limit, dynamic air elimination manifold, ON/OFF switch, junction box, 3/4" drain valve, plate heat exchanger and combi hot water assembly, hydronic Y-strainer, circulator flanges and door safety switch.

Included (field install): Clean in place valves, relief valve and hydronic circulator (wiring included).



NOW!

ASK ABOUT
Resolute[®]
RT



Scan code for
more information

“Tankless coil ratings *overstate* hot water delivery. They use a misleading short five minute flow test. They just can’t keep up with Ascent Plus’ continuous flow.”



Proven boiler design with residential lifetime limited warranty!

See actual warranty for details.

Energy Kinetics
51 Molasses Hill Road
Lebanon, NJ 08833

(908) 735-2066

Scan code to visit
our website at
EnergyKinetics.com



As an ENERGY STAR[®] Partner, Energy Kinetics has determined model EK1T+ meets ENERGY STAR guidelines for energy efficiency for oil heat input 0.68 GPH and gas heat input 80 MBH. ©The color yellow for heating boilers is a registered trademark of Energy Kinetics.