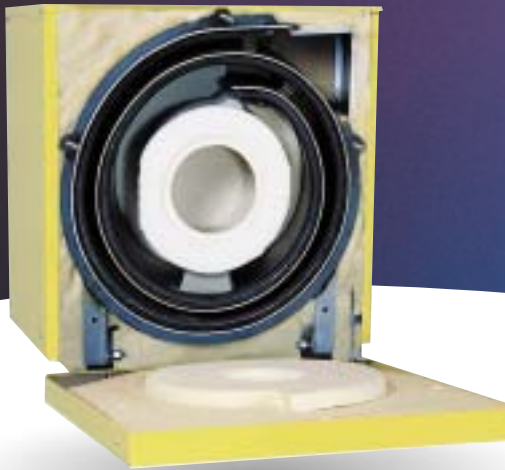


**Propane and  
natural gas!**

# Energy Kinetics' hybrid propane and natural gas systems for every home!



Our patented spiral boiler *precisely* controls the flow of water and flue gases for the best heat transfer. **Plus!** There's no pins, baffles or micro passages to foul and reduce efficiency over time.

Part of the System 2000 family of products manufactured by



- Exceptionally clean burning
- Light weight
- Highest efficiency
- More quiet than a microwave!
- Cuts up to 40% off fuel!
- Multiple zone control
- Stackable model available

It's got to be  
**SYSTEM  
2000**<sup>®</sup>

Call us today for **800-661-0902**  
more information [www.system2000.com](http://www.system2000.com)

Accepted For Use City of New York Department of Buildings MEA 140-03-E



# EK1 EK2 Natural Gas / Propane

**System 2000 is an integrated heat and hot water system – makes both heat and hot water!**

**Homeowners enjoy economical heat, plus virtually endless hot water with lower energy costs. Plus, System 2000 delivers significant savings over electric or traditional hot water making methods, with whisper quiet operation!**



No chimney needed! Ground level venting stays relatively cool!

**POWER VENTING** Homeowners who plan to save money by converting from expensive electric heat to gas/propane often find themselves up against a brick wall: *the high cost of chimney construction.* But with System 2000's unique combustion chamber, combined with a 10 foot long flue passage, gases leave System 2000 clean, and relatively cool. So they can be vented *directly through-the-wall.* No chimney is needed! An excellent benefit for homeowners converting from electric heat, heat pumps or for new home construction. Power venting is the safest method of side wall venting and is a low cost alternative to chimney construction.

## SPECIFICATIONS: EK1 FRONTIER

Input BTU/HR			
80,000	100,000	120,000	150,000
Gross Output – Natural Gas BTU/HR			
69,000	85,000	101,000	125,000
Gross Output – Propane BTU/HR			
70,000	88,000	105,000	129,000
AFUE – Natural Gas			
86%	85%	84%	83%
AFUE – Propane			
88%	88%	87%	86%

Energy Converter 270 lbs. Size: 24.5" x 26.5" x 17.5"  
 Storage Tank 115 lbs. Size: 20" x 50"  
 Total System 450 lbs.  
 Domestic water GPH: 175 to 195 Hot water savings of 25% compared to typical gas hot water heater

## SPECIFICATIONS: EK2 FRONTIER

Input BTU/HR			
175,000	200,000	235,000	250,000
Gross Output – Natural Gas BTU/HR			
149,500	168,500	187,500	204,500
Gross Output – Propane BTU/HR			
153,000	173,000	192,000	209,000
AFUE – Natural Gas			
85%	84%	83%	82%
AFUE – Propane			
87%	87%	85%	84%

Energy Converter 350 lbs. Size: 24.5" x 27.5" x 24.75"  
 Storage Tank 115 lbs. Size: 20" x 50"  
 Total System 550 lbs.  
 Domestic water GPH: 270 to 350 Hot water savings of 25% compared to typical gas hot water heater

## Features and benefits of System 2000 performance:

### Energy Converter

Energy Recovery	Much lower fuel consumption than normal boilers and "indoor/outdoor reset" boilers.
3-bolt awing down door	Easy service and access to all components
300 net stack temperature	As high as 88% efficiency
10 feet forced counter flow passages	Maximum heat recovery
Water content: EK1 = 2.5 gal., EK2 = 4 gal.	Rapid heat up, cool down
Wet base design	Minimizes heat losses – lower fuel bill
High temperature ceramic combustion chamber	Incinerates fuel – clean, safe and durable
Jacket & insulation: EK1 90 lbs., EK2 110 lbs.	Minimize heat losses
Buried combustion	Quiet operation
3/16" pressure vessel steel throughout	50% thicker than boiler tubes
ASME code construction	Carefully inspected, pressure tested
All welded and threaded connections	No gaskets to leak or service
Built in de-aerator	Eliminates air from system. No "gurgle"
Front cover swings down on Frontier	Easy to inspect and clean
Large open passages	Easy to inspect and clean
Small size	Compact installations
Power vent chimneyless option available	Save thousands on chimney construction
<b>Limited lifetime warranty/Option to transfer.</b>	<b>Energy recovery is standard on all systems.</b>

### Storage Tank

40 gallon capacity	Plenty of storage for peak demands
80 and 120 gallon tank options	Even more storage for extraordinary needs
Heavily insulated tanks	Very low heat loss
Glass lined with anode rod protection	High corrosion resistance
Bronze circulating pump	Trouble free, long life
Layered heat stratification	Hottest water to outlet, cooler water at bottom for most efficient energy recovery
Adjustable aquastat	For temperature control
Stainless steel tank options available	

### Hot Water Exchanger

External unit	Not in boiler, not in tank...easy access
Stainless steel construction	Durable, corrosion resistant
Wrinkle flow counterflow heat transfer	High turbulence for rapid heat transfer
175 to 350 GPH	High output.
Compact	Low water content
Easily backwashed or chemically cleaned	Maintains capacity even with marginal water conditions
Union connections	Easily serviced

### Zone Controls

Motorized valves	Quiet, proven and reliable
Zone circulators	Optional
Standard or clock thermostats	Uses conventional controls

### Digital Energy Manager with Energy Recovery

Solid state printed circuit with surge protection	Rugged and reliable
LED indicators	For all functions; super service aid
5 zones standard	Four heating zones, one hot water zone
Expandable	Up to 15 zones available
A complete Energy Manager	Programmed response to heat and hot water demand
Quick connector terminals	Easy installation or service
Printed circuit service board	An easy way to check out system function
Limited lifetime warranty	Minimal rebuild charge after 5 years

### Options

Natural Gas, propane or oil heat	Operates on natural gas, propane/LP gas or oil and can be converted to any in the field.
Outside combustion air	Isolated from home; whisper quiet operation
Frontier Model	Versatile with complete front access
Pre-packaged units	Installation time reduced
Outside Freedom Model	Location optional (not MEA or UL listed)
Mineral resistant hot water tanks	Performs in severe water conditions



As an ENERGY STAR® Partner, Energy Kinetics has determined that this product meets ENERGY STAR guidelines for energy efficiency. ® The color yellow for heating boilers is a registered trademark of Energy Kinetics.

\*Domestic hot water rating based on first hour draw with 77°F rise and 40 gallon tank.



51 Molasses Hill Road  
 Lebanon NJ 08833  
 Tel: 800 323 2066  
 Fax: 800 735 2068

visit [www.system2000.com](http://www.system2000.com)



Accepted For Use  
 City of New York  
 Department of Buildings  
 MEA 140-03-E

